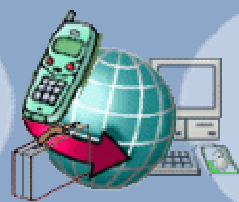


# The 2010 International Conference on Active Media Technology – AMT 2010

August 28-30, 2010, Toronto, Canada



## Call for Papers

<http://www.wici-lab.org/amtbi10/>  
<http://www.yorku.ca/amtbi10>

### Organization

#### Conference General Chairs

Sheila Petty, Canada  
Runhe Huang, Japan

#### Program Chairs

Pawan Lingras, Canada  
Aijun An, Canada

#### Organizing Chair

Jimmy Huang, Canada

#### Publicity Chairs

Daniel Tao, Australia  
Jian Yang, China

#### IEEE-CIS-TFBI Chair

Ning Zhong, Japan

#### WIC Co-Chairs/Directors

Ning Zhong, Japan  
Jiming Liu, HK

#### WIC Advisory Board

Edward A. Feigenbaum, USA  
Setsuo Ohsuga, Japan  
Benjamin Wah, USA  
Philip Yu, USA  
L.A. Zadeh, USA

#### WIC Tech. Committee

Jeffrey Bradshaw, USA  
Nick Cercone, Canada  
Dieter Fensel, Austria  
Georg Gottlob, UK  
Lakshmi Jain, Australia  
Jianchang Mao, USA  
Pierre Morizet-Mahoudeaux,  
France  
Hiroshi Motoda, Japan  
Toyoaki Nishida, Japan  
Andrzej Skowron, Poland  
Jinglong Wu, Japan  
Xindong Wu, USA  
Yiyu Yao, Canada



### INTRODUCTION

Active Media Technology 2010 will be jointly held with the 2010 International Conference on Brain Informatics (BI 2010). The two conferences will have a joint opening, keynote, reception, and banquet. Attendees only need to register for one conference and can attend sessions, exhibits and demonstrations across the two conferences.

The AMT-BI 2010 joint conference is co-organized by Web Intelligence Consortium (WIC) (<http://wiconsortium.org>) and IEEE Task Force on Brain Informatics (IEEE TF-BI).

### Conference Topics and Areas Include, but Not Limited to

- \* Active Computer Systems and Intelligent Interfaces
- \* Adaptive Web Systems and Information Foraging Agents
- \* Agent-Based Software Engineering and Multi-Agent Systems
- \* AMT for Semantic Web and Web2.0
- \* Cognitive Foundations for AMT
- \* Conversational Informatics
- \* Data Mining, Ontology Mining and Web Reasoning
- \* Digital City and Digital Interactivity
- \* E-Commerce and Web Services
- \* E-learning
- \* Entertainment and Social Applications of Active Media
- \* Evaluation of Active Media and AMT Based Systems
- \* Human-Web Interaction
- \* Human Factors in AMT
- \* Information Retrieval
- \* Machine Learning and Human-Centred Robotics
- \* Multi-Modal Processing, Detection, Recognition, and Expression Analysis
- \* Network, Mobile and Wireless Security
- \* Personalized, Pervasive, and Ubiquitous Systems and their Interfaces
- \* Semantic Computing for Active Media and AMT Based Systems
- \* Sensing Web
- \* Smart Digital Media
- \* Trust on Web Information Systems
- \* Web Based Social Networks
- \* Web Mining, Wisdom Web and Web Intelligence

### IMPORTANT DATES

Electronic submission of full papers: **March 31, 2010**  
Notification of paper acceptance: **June 1, 2010**  
Camera-ready of accepted papers: **June 24, 2010**  
Conference: **August 28-30, 2010**

### PAPER SUBMISSION

High-quality papers in all AMT related areas are solicited. Papers exploring new directions will receive a careful and supportive review. All submitted papers will be reviewed on the basis of technical quality, relevance, significance, and clarity.

The proceeding of the conference will be published by Springer as a volume of the series of Lecture Notes in Computer Science/Lecture Notes in Artificial Intelligence (LNCS/LNAI). Extensions of selected papers from the proceedings will be considered for publication in special issues of international journals.

Authors are strongly encouraged to use Springer LNCS/LNAI manuscript submission guidelines (available at <http://www.springer.de/comp/lncs/authors.html>) for their initial submissions (a maximum of 12 pages in Springer LNCS/LNAI style file). All papers must be submitted electronically in PDF format only, using the conference management tool.

Detailed instructions and a paper submission form can be found the AMT'10 Web page at <http://www.wici-lab.org/amtbi10/>

**Contact Information:** Pawan Lingras, [pawan@cs.smu.ca](mailto:pawan@cs.smu.ca) and Aijun An, [aan@cse.yorku.ca](mailto:aan@cse.yorku.ca)